

CAT6 CABLE

LTC6ULSZH58

LAN CABLE CAT6 SOLID UTP LSZH

CONDUCTOR

Conductor: 23AWG Bare Solid Copper
Insulation: PE
LSZH Jacket available
Flame test: FT2
RoHS / Reach compliant

APPLICATIONS

10Base-T, 100Base-T (IEEE 802.3)
1000Base-Tx Gigabit Ethernet

INDUSTRY STANDARDS

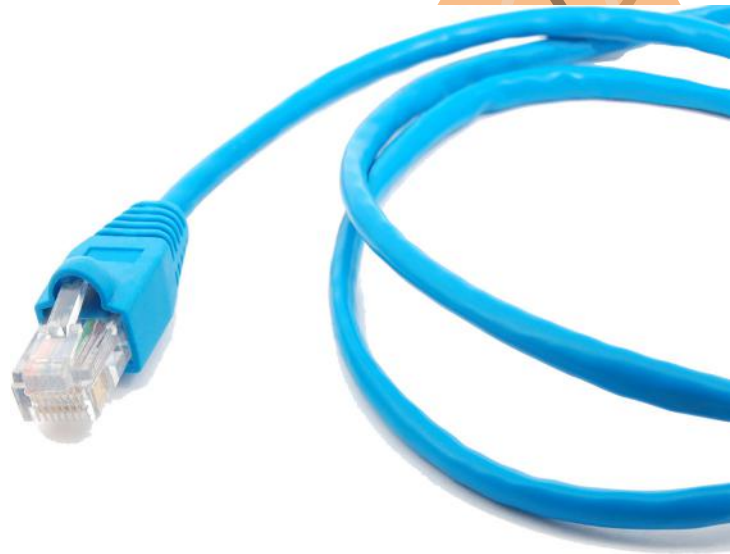
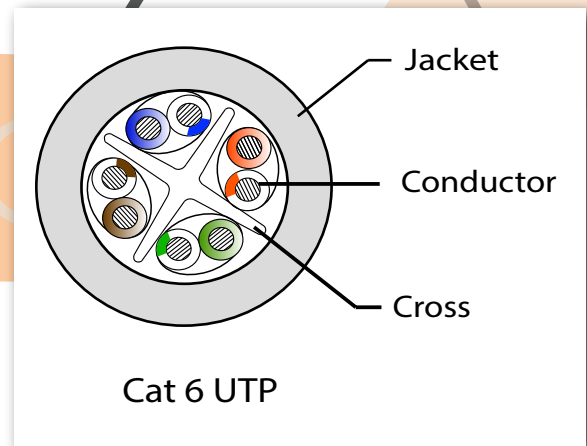
UL Listed LSZH*
Product standard certification: UL20851
Verified to ANSI/TIA-568-C.2 CAT.6

ELECTRICAL CHARACTERISTICS

Impedance: $100 \pm 15 \Omega$
Mutual Capacitance MAX.nf/1000ft: 17.1
DC Resistance Unbalance of a pair: 5% MAX.
Pair to Ground: 330Pf/100M MAX.
Propagation Delay Skew: 45ns/100M
Normal Velocity of Propagation: 68% at 250MHz

*LSZH: Low Smoke Zero Halogene

*Connectors sold separately.



Lamatel

Lamatel Canada
<https://ca.lamatel.com>

Products specifications are subject to change without prior notice.