

# Installation Guide

4-Element Dipole Array Antennas | LT-ANTD4-380-470-11

## Before Assembling and Mounting

Utmost care has to be taken while choosing the installation location of the antenna. Be sure to look for surrounding buildings and electric power lines. Prepare all parts ready prior to installation. Follow the safety precautions carefully to prevent electric shock accidents. Assemble the antenna and bracket on the ground before installing it at the chosen location to avoid the rotation of the antenna with the wind load.

## Safety Precautions

Experience and skills are required to install, maintain and remove antennas. Make sure to consult an expert before attempting to do it yourself.

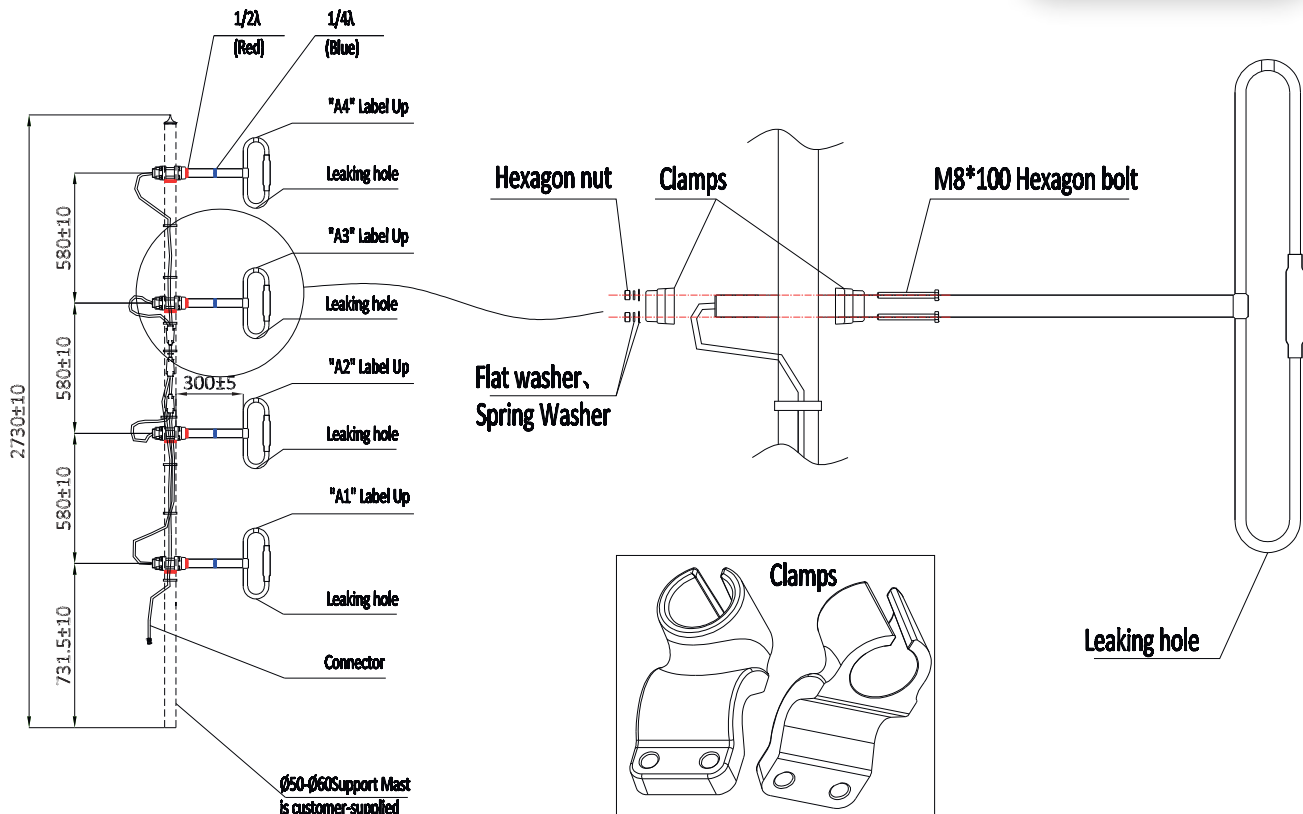
Safety devices and appropriate PPE for tower climbing and rigging activities must be well-grounded for lightning protection. Make sure the transmit power is turned off when the installation is performed. Failure to comply may result to serious injury.

Do not install on a wet or windy day or when lightning or thunder is in the area. Do not use metal ladder. To prevent electric shock accidents, install the antenna far from power, telephone and high voltage lines.

Lamatel disclaims any liability or responsibility for the result of improper or unsafe installation practices.



## Installation Sketch



\*LT-C/ANT-1E Full Mounting Kit is Sold Separately.  
Product specifications are subject to change without prior notice.  
For more information, visit [www.lamatel.ca](http://www.lamatel.ca) or send an email to [sales@lamatel.com](mailto:sales@lamatel.com).